

FELDER VIC Pty Ltd

18 Chingford St
Fairfield VIC 3078
Tel.: 03 9018 8346
E-mail: FelderVic@gmail.com



FELDER Group Australia NSW Office
Russell Street • Unit 1 / 125 • Emu Plains NSW 2750
Phone: 1300 504 825 Email: admin@felder.net.au

QLD Office
PO Box 245 • Canungra QLD 4275
Phone: 1300 519 776 Email: pb@felder.net.au

Offer no.
Customer number

Date
Your rep

Page 1 of 11

JP15/021131T/t

We would like to thank you for your enquiry and are pleased to offer you the following:

CNC machining centre profit H08 13.25 S

The profit earner for standard and bespoke orders in both solid wood and panels



Image may be pictured with additional options.

A CNC processing centre from FORMAT-4, ensuring the success of your company

Our experience means that you can be confident in your decision!

For more than 55 years, we have committed ourselves to developing, producing and selling the highest quality woodworking machines. Today, Felder-Group machines are amongst the bestselling in the world.

Format-4 - the first choice for those looking to increase production and revenue.

We will work with you on an individual basis to establish a revenue-orientated solution to improve production. We will integrate your current production processes into a new, optimised concept.

You can then use the suggestions we put forward to develop your own ideas and plans on how you will make your company the most profitable in your market.

We can simulate your operation, an indispensable decision-making reassurance for you.

Come and have a look at the most interesting production package in one of our exhibition centres. We will simulate your operation and production process with the Format-4 woodworking machines. This will help you to make a decision that will help your operation for many years to come.

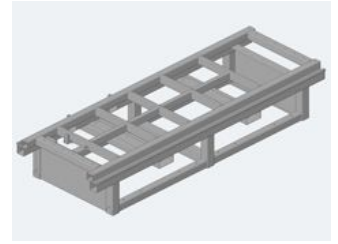
Format-4, the right decision. A perfect combination of durable quality and precision.

Format-4 machinery is one of Austria's top products. Modern production processes and machinery as well as continuous quality assurance checks, guarantee the quality, precision and reliability of your new Format-4.

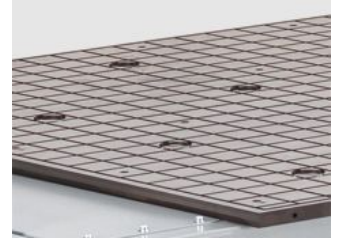


profit H08 13.25 machining centre:

The profit H08 13.25 chassis is made of thick-walled electro-welded shaped tubes. Steel ribbing within the chassis ensures high stability. To guarantee the general tolerances of the machine the quality of the floor surface must comply with the requirements included in the foundations specifications layout.

**Matrix Table:**

The matrix table is made of phenolic resin and has grooves in a grid pattern designed for the attaching of jigs and clamping of various materials. The grooves are suitable for inserting a rubber sealing cord that is included with the machine.

**Cylinder stops situated around the matrix table:**

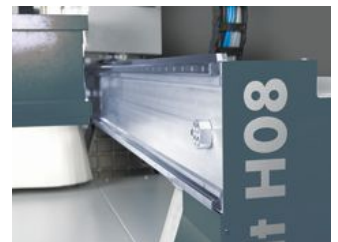
2 stops in the X direction and 1 stop in the Y direction aid the exact positioning of the workpiece to the rear left hand side of the matrix table.

**X-axis guiding system:**

The outrigger is moved along the x-axis in a gantry system via a gear rack with a cambered tooth profile. High precision is guaranteed. The reduction gearing guarantees high machining quality and accuracy. The bearings consist of encapsulated ball bushings running on hardened and polished linear guides.

**Y-axis guiding system:**

A rack system with angled, cambered teeth positions the Y axis, ensuring high precision. The gear reducers guarantee a high level of processing quality and repeatability. The bearings consist of encapsulated recirculating ball bushings running on hardened and ground linear guides.

**Guiding system Z-axis:**

The tooling head is positioned in the Z-axis via a recirculating ball screw. Hardened and milled linear guides, allow a smooth and accurate positioning along the Z-axis.

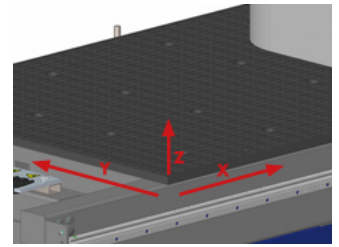


Axis displacement:

X= 3260 mm

Y= 1630 mm

Z= 225 mm

**Working area:**

X= 2500 mm

Y= 1250 mm

Z= 85 mm depending on the clamping system, see layout

Axis positioning speed:

X= 25 m/min

Y= 25 m/min

Z= 15 m/min

Automatic central lubrication system:

At regular intervals preset in the machine program, the lubrication of the X, Y and Z axis will be checked and if required lubricated pneumatically. The lubrication storage container has a capacity of 2 kg.

**Electrical cabinet:**

The electrical cabinet is positioned on the left hand side of the machine chassis and complies with all international norms.

Additional to this, the electrical cabinet also constitutes a fixed component of the safety equipment.

The operating terminal is integrated into the electrical cabinet and guarantees maximum operating comfort in the smallest of spaces.

Control terminal for the machine operation**Equipped with:**

- compact - Control Machine control system
- 24" LED colour display
- Keyboard, mouse and mouse pad
- 1 USB port
- Height adjustable unit

**Vacuum of the operating area:**

The work field is divided into 6 symmetrical vacuum fields. 3 fields in the X direction and 2 fields in the Y direction guarantee optimum vacuum distribution. The selection of the required vacuum fields can be done manually using turn handles.



Vacuum system with 180 m³/h nominal performance:

2 dry vane pumps with a total vacuum performance of:
 180 m³/h at 50 Hz
 216 m³/h at 60 Hz

**Safety devices conforming to CE regulations:**

The double light beam sensor emanates from the electrical cabinet, encompassing the whole machine providing flexibility when accessing and operating the machine.

- Emergency stop button
- Control sensors for the vacuum and compressed air

**Manual 10kW ER32 milling spindle:**

The main spindle is connected to the Z-axis plate via linear guides with 2 linear guides vertically guiding the spindle. The clamping of the tool is done using a ER32 collet chuck. This ensures safe operation.

Connection load: 10kW (S6)
 Speed: 1000-24000 RPM
 Drive: 3 phase HF motor, controlled using an inverter
 Rotation direction: right/left
 Bearings: Ceramic
 Spindle cooling: Air cooled

**Dust extraction hood:**

Manual height adjustment of the extraction hood of the milling spindle.
 The position can be set at any position using the slotted holes.
 Please refer to the machine layout for specifications



Compact - control:

Compact - control with machine licence for the processing of ISO Code and Woodflash programs on the machine. The programming is carried out on an external computer, programs are transferred using USB or network connection. Included with the machine: CNC Board for the machine operation and Tecnomanager for the tooling editor.

profit H08 operating manual English including:

Operating instructions for the frequency inverter, air conditioning, drilling head, electric spindle, vacuum pump, electrical and pneumatical diagrams, recovery DVD for Windows, guarantee conditions DELL custom CD

profit H08 tools:

Allen key drill head; pressure grease gun for drill head (only when the machine is originally equipped with a drill head); Torx for grooving saw (only when the drill head is originally equipped with a grooving saw); C-spanner for collet chuck.

Machine packaging for H08 13.25:**Packaging dimensions:**

L x B x H: 4000 mm x 2000 mm x 2000 mm

Optional specification

Number @452 - 1 Piece

Motor 3x 400 V 50 Hz 10.0 kW

Number 902 - 1 Piece

Machine language English

Number C08 - 1 Piece

Air conditioning for electrical cabinet
Equals out external temperature differences of over 40° and guarantees a constant operating temperature of the electrical components in the electrics box.



Number C12 - 1 Piece

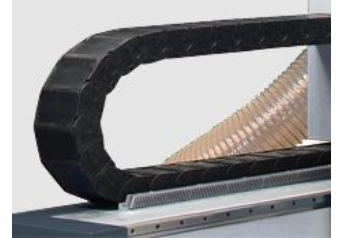
Uninterrupted power supply to the PC

The UPS guarantees power to the machine computer even in the event of a power cut. Programs can be saved and the machine computer can be shut down properly without any loss of data.

Number C15 - 1 Piece

Closed cable draw in X and Y axis

This ensures that all cables, pipes and hoses contained in the cable cover are protected from damage.

**Number C16 - 1 Piece**

Additional sealant on all guides

Additional sealant for the runner carriages in the X, Y and Z direction. This configuration enables the processing plastics, plaster boards and aluminium composite boards.

**Number C18 - 1 Piece**

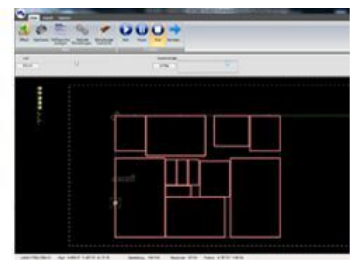
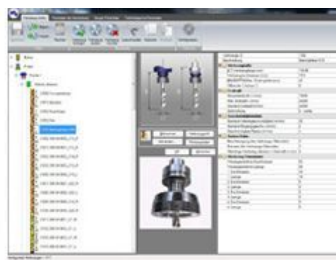
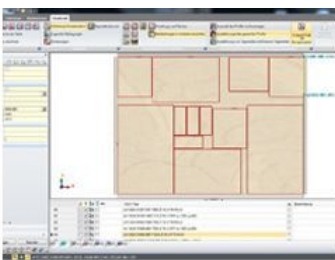
Hand-held terminal for the remote control of the axes

With potentiometer and emergency off switch. The speed can be adjusted whilst processing, making it easier to process more complex components.

**Number C342 - 1 Piece**

Wood Flash - Control instead of Compact - Control (1 machine license, 1 external license)

Woodflash - control with machine licence for the processing of Woodflash generated programs. Graphical symbol operating display for the clear and easy to understand display and programming. Included with the machine: CNC Board, editor for program creation and optional 3D-simulator for the display of programmed processes as well as movement direction.

**Number C54 - 1 Piece**

Monitoring of the fence cylinder - 2 rows of stops

End position monitoring of the mechanical cylinder stops positioned around the machine.



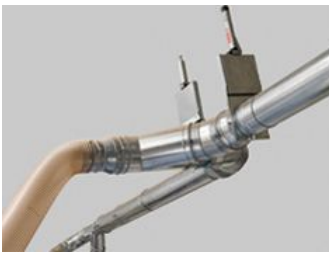
Number C304 - 1 Piece

Customer preparation of electrical installation for 3x 400 V electrical connection according to the appended layout_ with the following specifications must be available at the machine installation site: supply voltage 3x400V +/- 5%_ 50 Hz connected load max.: 18 kW approx._ recom. back-up fuse 35A A stabiliser is recommended if frequent voltage fluctuations. A qualified electrician must carry out the initial electrical connection (on the 1st day).

**Number C306 - 1 Piece**

Customer preparation of dust extraction installation

A vacuum connection_ according to the appended layout_ with the following specifications must be available at the machine installation site: extraction port D=200mm air suction 2200 m³/h air speed 20 m/sec pressure loss 1000 Pa The minimum values may vary depending on whether the machine is fitted with additional equipment requirements may therefore need to be adjusted. The connection of the machine extraction to the extraction system must be carried out on the 2nd day by a technician from the extraction supplier.



Subtotal

+ 10% GST

Total amount (AUD)

All electrical work has to be performed by a certified electrician!!!
 If the machine is supplied with a power cable, the blue wire is neutral and not a phase!!! Machines are rated for 3x400 +/-10%. If operated outside these tolerances, the warranty for electrical components is void
 Longer cables, plug points, wall sockets and their installation are the responsibility of the client!!!
 Please use a voltage stabilizer if in doubt about your power supply!!!

! Please note that you will need a forklift on the delivery date !

The goods stay in property of FELDER VIC until they are paid in full.

Price - total amount

Payment

Shipment

Delivery time

Guarantee

Validity of Offer

For all technical details, please refer to the "**FORMAT-4 catalogue**".

We thank you for your interest and trust this quotation will meet your satisfaction.

The **Felder - TEAM** would be pleased to assist you with any further information you may require.

With kind regards,

Felder

//AGB's

